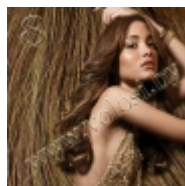




300.000 BYR

000

### 50-53 Н•Д¼ BEST (160 Д³Н€Д°Д¼Д¼)



300.000 BYR

ДœДµД³Д°7+NORD ДœДµД³Д° Д'Д•Д;Дœ НОРД Д;НфД;ДµН€ Д'НфН•Н,Д³Д¹ Д½Д°Д±Д³Н€ Н•Д³Н•Н,Д³Н•Н%Д,Д¹ Д,Д. 10 Д»Д,Д±Д³ 11 Д;Н€Н•Д'ДµД¹ (Д½Д° Д²Д°Н^ Д²Н<Д±Д³Н€).Д'Д³Д»Д³Н•Н< Д ДµД¼Д, Д•Д³Н€Д', Д;Д³ Д'Д,Д°Д¼ДµН,Н€Нф Д, Н•Н,Н€НфД°Н,НфН€Дµ Д³Н‡ДµД½Н€ Н•Н...Д³Д¶Д, Н•Д³ Н•Д»Д°Д²Н•Д½Н•Д°Д,Д¼Д, Д,Д¼ДµНŽН, Д³Д±Н€Д°Д±Д³Н,Д°Нф Д°Д³Д½Н‡Д³Д² Â«Д°Д½Н,Д,Н•ДµН‡ДµД½Д,ДµÂ»...ДžД±Н%Д,Д¹ Д²ДµН• Д½Д°Д±Д³Н€Д° Н•Д³Н•Н,Д°Д²»Н•ДµН, 160 Д³Н€Д°Д¼Д¼ Д•Дµ Д,Д¼ДµНŽН, Â«Н•ДµН‡ДµД½Н•Н...Â» Д°Д³Д½Н‡Д³Д² Д, Â«Н,Д,Д»Д,Н€Д³Д²Д°Д,Â» Д° Д½Д,Д•Нф, Н,Д°Д°Д,Д¼ Д³Д±Н€Д°Д•Д³Д¼, Д½Д°Д±Д³Н€ Н•Д³Н...Н€Д°Д½Н•ДµН, Н‡ДµД»Д³Н•Н,Д½Д³Н•Н,Н€ Д³НфН•Н,Д³Н,Н<, Д°Д°° Нф Д³Н•Д½Д³Д²Д°Д½Д,Н•, Н,Д°Д° Д, Д½Д° Д°Д³Д½Н‡Д°Н... Д'ДµД• Д³Н•Н<Д;Д°Д½Д,Н• Д² Д;Н€Д³Н‡ДµН•Н•Дµ Н•Д°Н•Д;Д»НфД°Н,Д°Н‡Д,Д. ДœН€ДµН•Н•Н< Н•Д'ДµД»Д°Д½Н< Д;Д³ Д;Н€Д,Д½Н‡Д,Д;Нф Â«ДœДµД½Н€Н'Дµ Д°Д»Д,Д;Н•, Д±Д³Д»Н€Н'Дµ Д²Д³Д»Д³Н•Â»!

$\partial' \partial_{\mu} \tilde{N} \cdot \partial_{\tilde{z}} \tilde{N} \in \partial_{\mu} \partial' \partial \gg \partial^{\circ} \partial^3 \partial^{\circ} \partial_{\mu} \partial^{1/4} \tilde{N} \langle \tilde{N} \dots \partial^{1/2} \partial^{\circ} \partial \pm \partial^{3/4} \tilde{N} \in \partial^{3/4} \partial^2 \partial^{3/4} \partial \pm \partial \tilde{N} f \partial^{1/4} \partial^{\circ} \partial^{1/2} \tilde{N} \cdot \tilde{N} f \tilde{N} \ddagger \partial_{\mu} \tilde{N}, \partial^{3/4} \partial^{1/4} \partial_{\tilde{z}} \tilde{N} \dots \partial' \partial \gg \partial_{\tilde{z}} \partial^{1/2} \partial^{1/2} \tilde{N} \langle$

- 1- $\tilde{N} \cdot \partial \gg \partial_{\mu} \partial^{1/2} \tilde{N}, \partial^{\circ} \hat{a} \epsilon'' \hat{A}$  ( 20 cm) ( 3  $\partial^{\circ} \partial \gg \partial_{\tilde{z}} \partial_{\tilde{z}} \tilde{N} \cdot \tilde{N} \langle$ )
- 2- $\tilde{N} \cdot \partial \gg \partial_{\mu} \partial^{1/2} \tilde{N}, \partial^{\circ} \hat{a} \epsilon''$  ( 15 cm) ( 2  $\partial^{\circ} \partial \gg \partial_{\tilde{z}} \partial_{\tilde{z}} \tilde{N} \cdot \tilde{N} \langle$ )
- 3- $\tilde{N} \cdot \partial \gg \partial_{\mu} \partial^{1/2} \tilde{N}, \partial^{\circ} \hat{a} \epsilon''$  ( 15 cm) ( 2  $\partial^{\circ} \partial \gg \partial_{\tilde{z}} \partial_{\tilde{z}} \tilde{N} \cdot \tilde{N} \langle$ )
- 4- $\tilde{N} \cdot \partial \gg \partial_{\mu} \partial^{1/2} \tilde{N}, \partial^{\circ} \hat{a} \epsilon''$  ( 10 cm) ( 2  $\partial^{\circ} \partial \gg \partial_{\tilde{z}} \partial_{\tilde{z}} \tilde{N} \cdot \tilde{N} \langle$ )
- 5- $\tilde{N} \cdot \partial \gg \partial_{\mu} \partial^{1/2} \tilde{N}, \partial^{\circ} \hat{a} \epsilon''$  ( 10 cm) ( 2  $\partial^{\circ} \partial \gg \partial_{\tilde{z}} \partial_{\tilde{z}} \tilde{N} \cdot \tilde{N} \langle$ )
- 6- $\tilde{N} \cdot \partial \gg \partial_{\mu} \partial^{1/2} \tilde{N}, \partial^{\circ} \hat{a} \epsilon''$  ( 5 cm) ( 1  $\partial^{\circ} \partial \gg \partial_{\tilde{z}} \partial_{\tilde{z}} \tilde{N} \cdot \partial^{\circ}$ )
- 7- $\tilde{N} \cdot \partial \gg \partial_{\mu} \partial^{1/2} \tilde{N}, \partial^{\circ} \hat{a} \epsilon''$  ( 5 cm) ( 1  $\partial^{\circ} \partial \gg \partial_{\tilde{z}} \partial_{\tilde{z}} \tilde{N} \cdot \partial^{\circ}$ )
- 8- $\tilde{N} \cdot \partial \gg \partial_{\mu} \partial^{1/2} \tilde{N}, \partial^{\circ} \hat{a} \epsilon''$  ( 15 cm) ( 2  $\partial^{\circ} \partial \gg \partial_{\tilde{z}} \partial_{\tilde{z}} \tilde{N} \cdot \tilde{N} \langle$ )
- 9- $\tilde{N} \cdot \partial \gg \partial_{\mu} \partial^{1/2} \tilde{N}, \partial^{\circ} \hat{a} \epsilon''$  ( 15 cm) ( 2  $\partial^{\circ} \partial \gg \partial_{\tilde{z}} \partial_{\tilde{z}} \tilde{N} \cdot \tilde{N} \langle$ )
- 10- $\tilde{N} \cdot \partial \gg \partial_{\mu} \partial^{1/2} \tilde{N}, \partial^{\circ} \hat{a} \epsilon''$  ( 10 cm) ( 2  $\partial^{\circ} \partial \gg \partial_{\tilde{z}} \partial_{\tilde{z}} \tilde{N} \cdot \tilde{N} \langle$ )

$\partial^{\circ} \partial^{1/2} \tilde{N}, \partial^{3/4} \tilde{N} \in \partial^{1/4} \partial^{\circ} \tilde{N} \ddagger \partial_{\tilde{z}} \tilde{N} \cdot \partial^{3/4} \partial_{\tilde{z}} \tilde{N} \in \partial^{3/4} \partial^{\circ} \partial^2 \tilde{N} \ddagger \partial_{\mu}$

$\partial \in \partial^{1/2} \partial_{\mu} \partial^{1/2} \partial_{\tilde{z}} \tilde{N} \cdot \partial_{\tilde{z}} \partial^{3/4} \partial^{\circ} \tilde{N} f \partial_{\tilde{z}} \partial^{\circ} \tilde{N}, \partial_{\mu} \partial \gg \partial_{\mu} \partial^1$ :  $\partial \cdot \tilde{N} \% \partial_{\mu} \partial^{1/2} \partial_{\mu} \tilde{N}, \partial^{1/4} \partial^{1/2} \partial_{\mu} \partial^{1/2} \partial_{\tilde{z}} \partial^1 \partial^{3/4} \partial \pm \tilde{N} \cdot \tilde{N}, \partial^{3/4} \partial^{1/4} \tilde{N}, \partial^{3/4} \partial^2 \partial^{\circ} \tilde{N} \in \partial_{\mu}$ .  
 $\partial \ddot{Y} \partial^{3/4} \partial \ddagger \partial^{\circ} \partial \gg \tilde{N} f \partial^1 \tilde{N} \cdot \tilde{N}, \partial^{\circ}, \partial^2 \partial^{3/4} \partial^1 \partial' \partial_{\tilde{z}} \tilde{N}, \partial_{\mu}, \tilde{N} \ddagger \tilde{N}, \partial^{3/4} \partial \pm \tilde{N} \langle \partial^{3/4} \tilde{N} \cdot \tilde{N}, \partial^{\circ} \partial^2 \partial_{\tilde{z}} \tilde{N}, \tilde{N} \in \tilde{N} \cdot \partial^2 \partial^{3/4} \partial_{\mu} \partial^{1/4} \partial^{1/2} \partial_{\mu} \partial^{1/2} \partial_{\tilde{z}} \partial_{\mu}$ .